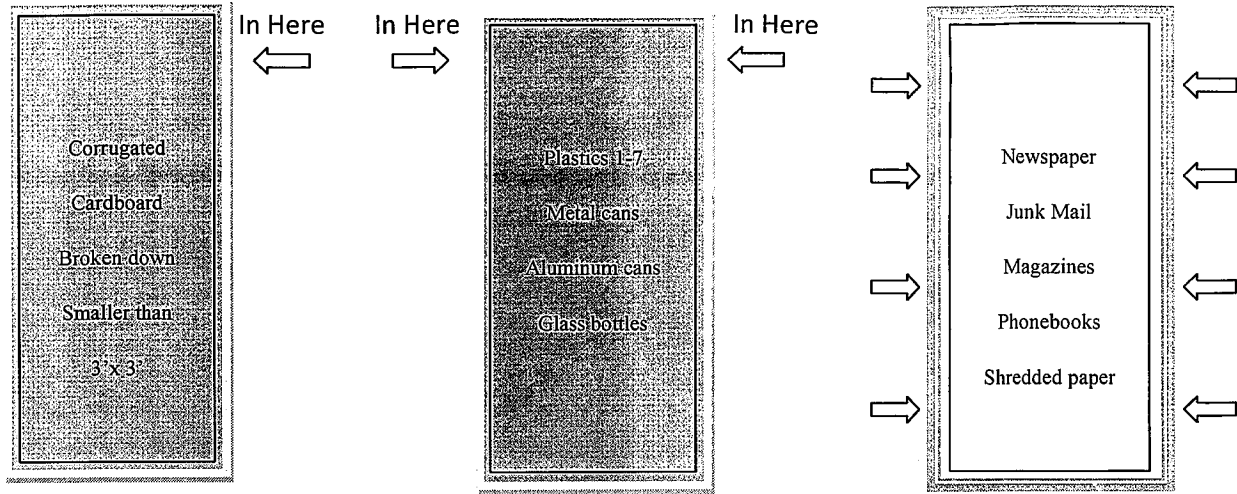


# Waste Management Recycling

## Divide Transfer Station



**CORDBOARD**


**CO-MINGLE**

**PAPER**

The Waste Management Recycling at Divide Transfer Station is provided as a no cost courtesy to our community. We find ourselves at the point that we need to ask for our community's help. Above is a layout of our recycling facility. Below you will find a list of acceptable recyclables and unacceptable trash. We ask that you put recyclables in loose, which means empty the bags and throw bags in trash containers please.

### Acceptable Recyclables

Corrugated cardboard

Plastics with a # 1 – 7 in a 

Metal Cans (clean)

Aluminum cans (clean)

Glass bottles

Newspaper

Junk mail


Magazines

Phonebooks

Shredded Paper

### Unacceptable Trash

NO - Styrofoam

NO - Plastics without a # 1 – 7 in a 

NO - Metals other than small cans

NO - Glass other than bottles

NO – napkins or other paper trash

NO – bubble wrap or plastic bags

NO – garbage

NO – shelving, car parts, baby seats, etc.

NO - Electronics

NO – Computers

We appreciate your patronage and are asking for your cooperation in this community service.

**Due to security cameras – ALL VEHICLES MUST ENTER THROUGH THE SCALE.**